

## The World Leader in Impact Printing™



**Impact Printers**  
Quick Reference  
2008



As part of our full line of dependable impact printers, Epson offers many choices designed to meet your individual needs. Our 9-pin printers deliver exceptional speed and productivity, while our 24-pin printers provide sharp, detailed text. Our DFX models include 4 sets of 9 pins to provide a distinctive high-speed solution. All of these heavy duty units offer powerful performance and incredible paper handling capabilities, accommodating thick forms and large workloads with ease.

**Epson 9-pin dot matrix printers**

Featuring durable, heavy and medium duty printers for continuous data processing and high speed drafting tasks – while offering competitively priced low cost printers – the Epson 9-pin dot matrix range offers exceptional value.

**Epson 24-pin dot matrix printers**

Offering all the features available across the Epson 9-pin range, but with the addition of scalable fonts and letter quality, for superior print quality, Epson 24-pin printers are ideal for front desk applications in the retail and service industries, and for tasks such as invoice and order printing.



## Technology Solutions

Epson is committed to providing advanced technology solutions that fulfill your multipart forms printing requirements. While other companies have scaled back their resources and support for this critical market, Epson continues to design, sell, and service quality impact printers. Perhaps that is why Epson is the world leader in impact printer sales. For dependability, reliability and exceptional support, Epson is the right choice to make.

## Durability, Service and Support

For maximum productivity, reliability, and support, Epson impact printers offer the ideal multipart forms printing solution. With a remarkable MTBF rating and incredible high-yield ribbons, each of these workhorses provides exceptional performance, at an affordable cost per page. And,

they're backed by a comprehensive warranty (see your sales representative for details), plus a nationwide network of authorized service centers, so you can be confident you'll have the support you need.

## Options and Accessories

At Epson, we offer a host of options and accessories designed to make our impact printers work harder for you. All our models offer Parallel and selected models offer USB connectivity, while some include a Type B interface slot that allows an Ethernet, Serial, Twinax, or Coax card for additional networking solutions.

For more information on the full line of Epson impact printers, call 1-800-GO-EPSON or visit us at [www.epson.com](http://www.epson.com)



## About Impact Printing

- 9-pin printers print faster and can print more copies of forms at once.
- Epson's DFX printer uses four sets of 9 pins for the fastest printing.
- 24-pin printer print sharper, more detailed text.
- Heavy-Duty printers are faster and handle thicker forms and larger workloads with ease.
- Print speed is measured in cps (characters per second) at 10 cpi (characters per inch). The higher the cps, the faster the printing.
- The more paper paths, the more flexibility. Tractor feeds handle continuous paper and multi-part forms, friction feeds handle single sheets, envelopes and postcards; straight paper paths accommodate heavier stock without bending or jamming.
- Epson's DFX and LQ-680Pro printers use advanced APG (Automatic Platen Gap) technology to automatically adjust print head position to prevent damage to the pins from unnecessary force.
- Epson impact printers support windows operating systems. Software drivers come standard or are available at [www.epson.com](http://www.epson.com)



### **Network-Ready Printers**

*Epson's expansive line-up features two 9-pin impact printers with an Ethernet interface for convenient networking capabilities:*

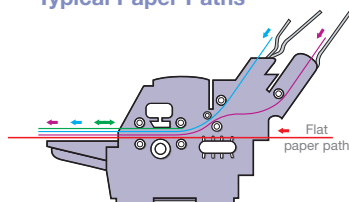
<u>Product</u>	<u>Code</u>
Epson FX-890N	C11C524001NT
Epson FX-2190N	C11C526001NT

# Accessories

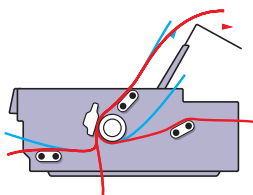
	LX-300+II	FX-890	FX-2190	DFX-9000	LQ-590	LQ-680Pro	LQ-2090	LQ-2180
Ribbon Cartridge (black, fabric)	8750	S015329	S015335	S015384	S015337	7762L	S015335	S015086
Single Bin Cut-Sheet Feeder	C806371	C806371	C806391	N/A	C806371	N/A	C806391	N/A
High Capacity Cut-Sheet Feeder	N/A	C806381	C806401	N/A	C806381	C806871	C806401	C806731
Second Bin Cut-Sheet Feeder*	N/A	N/A	N/A	N/A	N/A	C806791	C806741	C806741
Roll Paper Holder	8310	8310	N/A	N/A	8310	8310	8310	8310
Additional Tractor Unit	C800301	C800201	C800211	C12C800381	C800201	N/A	C800211	C800321
Paper Cutter/ Perforation Cutter	N/A	N/A	N/A	C815071	N/A	N/A	N/A	N/A
Interface Boards for Type B Slot	10/100 Base- TX Ethernet	C823781 (external)	C12C824352	C12C824352	C12C824352	C12C824352	C12C824352	C12C824352
	Serial	ON-BOARD	C12C824431	C12C824431	ON-BOARD	C12C824431	C12C824431	C12C824431
	Bidirectional Parallel	N/A	-----			ON-BOARD	-----	

\*Must be used in combination with High Capacity Cut-Sheet Feeder

## Typical Paper Paths



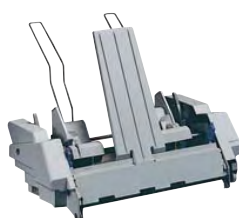
- Cut sheet manual feed front in – front out
- Optional 150 sheet cut sheet feeder
- Optional 50 sheet cut sheet feeder
- Tractor fed continuous



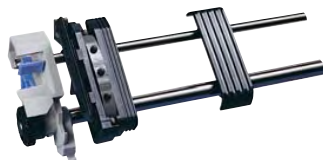
- Three continuous paper paths – front, rear, and bottom
- Two cut sheet paper paths – front and top

## Optional equipment

A comprehensive range of Epson paper handling options includes:



Cut sheet feeders



Tractor unit

## Cut sheet feeders

Offering 50, 150 and 250 sheet, for automatic selection of forms and plain stationery.

## Motorised sheet feeders

For high volume cut sheet printing, optional motorised cut sheet feeders are available for selected products, like the 150 sheet cut sheet feeder for the LQ-2180. Equipped with productivity enhancing, independent motor drives, these feeders reduce paper handling time and ensure optimum paper throughput.

## Paper feed tractors

A choice of push, pull, and push/pull combined tractors not only enable more than one stationery type to be permanently loaded for delivery on demand, but handle continuous and multi-part stationery more efficiently.

## Roll paper holder

This provides an inexpensive alternative to using continuous roll paper for applications requiring variable paper lengths.

\*Using Epson paper handling options



# Epson LX-300+II

*A reliable, compact solution for stand-alone environments*

#### Print Speed

High Speed Draft 337 cps (12 cpi)  
Draft 225 cps (10 cpi)  
Near Letter Quality 300 cps (10 cpi)  
56 cps (10 cpi)

#### Paper Paths

Rear Tractor  
Top Friction

#### Multipart Forms

Original + 4 copies

#### Interface

Parallel, USB and Serial

#### Printer Language

ESC/P® standard

#### Dimensions

6.26" H x 14.42" W x 10.84" D  
9.7 lb

#### Sound Level

49 dB (A)

#### MTBF

6,000 POH @ 25% duty cycle,  
35% coverage

#### Workload Capacity

Medium duty

#### Warranty

Two-year limited in the U.S. and Canada

#### Product Code

C11C640001

#### Ideal Replacement for:

Epson LX-800, LX-810, LX-300,  
Okidata® ML-184 Turbo, ML-186,  
Panasonic® KX-P1150, Citizen® GSX-190



9-Pin Narrow

# Epson FX-890\*

*Easy integration and maximum productivity in demanding print environments*

#### Print Speed

Ultra Speed Draft 680 cps (12 cpi)  
566 cps (10 cpi)  
High Speed Draft 559 cps (10 cpi)  
Draft 419 cps (10 cpi)  
Near Letter Quality 104 cps (10 cpi)

#### Paper Paths

Manual Front or top in, top out  
CSF Top in, top out  
Tractor Front, rear, bottom in,  
top out

#### Multipart Forms

Original + 6 copies

#### Interface

Parallel, USB, optional Type B

#### Printer Language

ESC/P, IBM PPDS, Okidata Microline

#### Dimensions

6.6" H x 16.3" W x 13.8" D  
16.8 lb

#### Sound Level

55 dB (A)

#### MTBF

20,000 POH @ 25% duty, 35% coverage

#### Warranty

Three-year limited in the U.S. and Canada

#### Product Code

C11C524001

#### Ideal Replacement for:

Epson FX-80/80+, FX-850, FX-870, FX-880,  
FX-880+, FX-980, Okidata ML-320, ML-320 Turbo,  
ML-420, Lexmark® 2380, 2480, Panasonic KX-P3200

\*Network version available Epson FX-890N - C11C524001NT



9-Pin Narrow

# Epson FX-2190\*

*The wide-format solution for easy integration  
and maximum productivity*

#### Print Speed

Ultra Speed Draft	680 cps (12 cpi)
	566 cps (10 cpi)
High Speed Draft	559 cps (10 cpi)
Draft	419 cps (10 cpi)
Near Letter Quality	104 cps (10 cpi)

#### Paper Paths

Manual	Front or top in, top out
CSF	Top in, top out
Tractor	Front, rear, bottom in, top out

#### Multipart Forms

Original + 6 copies

#### Interface

Parallel, USB, optional Type B

#### Printer Language

ESC/P, IBM PPDS, Okidata Microline

#### Dimensions

6.1" H x 23.2" W x 13.8" D  
21.2 lb

#### Sound Level

55 dB (A)

#### MTBF

20,000 POH @ 25% duty, 35% coverage

#### Warranty

Three-year limited in the U.S. and Canada

#### Product Code

C11C526001

#### Ideal Replacement for:

Epson FX-1180+, FX-2170, FX-2180, Okidata ML-321,  
ML-321 Turbo, ML-421, Lexmark 2381, 2481

\*Network version available Epson FX-2190N - C11C526001NT



9-Pin Wide

# Epson DFX-9000

*A high-speed workhorse with dual tractor design for  
easy transitions from one form to another*

#### Print Speed

High Speed Draft	1550 cps (10 cpi)
Draft	1320 cps (10 cpi)
Near Letter Quality	330 cps (10 cpi)

#### Paper Paths

Dual push tractors/paper paths; automatic  
back out and loading and forms switching\*;  
automatic paper thickness adjustment;  
optional pull tractor

#### Multipart Forms

Front	Original + 9 copies
Rear	Original + 6

#### Interface

Parallel, serial, USB, optional Type B

#### Printer Language

ESC/P, IBM PPDS

#### Dimensions

14.3" H x 27.6" W x 14.9" D  
75 lb

#### Sound Level

58 dB (A)

#### MTBF

20,000 POH @ 25% duty, 35% coverage

#### Warranty

One-year on-site limited warranty in the U.S.  
and Canada

#### Product Code

C11C605001

#### Ideal Replacement for:

Epson DFX-8000, 8500, Genicom 3800/3900 Series,  
OTC 4130, IBM® 4247-A00

\*Requires optional paper cutter



9-Pin Wide

# Epson LQ-590

*Powering business productivity with superior performance and reliability*

**Print Speed**

High Speed Draft 440 cps (10 cpi)  
Draft 330 cps (10 cpi)  
Letter Quality 110 cps (10 cpi)

**Paper Paths**

Manual insertion Front or top in, top out  
Cut sheet feeder Top in, top out  
Tractor Front, rear or bottom in, top out

**Multipart Forms**

Original + 4 copies

**Interface**

Parallel, USB, optional Type B

**Printer Language**

ESC/P2, IBM PPDs

**Dimensions**

6.3" H x 16.3" W x 13.8" D  
15.6 lb

**Sound Level**

52 dB (A)

**MTBF**

20,000 POH @ 25% duty cycle,  
25% coverage

**Warranty**

Three-year limited in the U.S. and Canada

**Product Code**

C11C558001

**Ideal Replacement for:**

Epson LQ-500, LQ-510, LQ-570+, LQ-570e,  
Okidata ML-390 Turbo, ML-490, Lexmark 2390, 2490,  
Panasonic KX-P2023, KX-P2123, KX-P3123



24-Pin Narrow

# Epson LQ-680Pro

*A high-quality printer with flatbed design to handle most any multipart forms printing task*

**Print Speed**

High Speed Draft 413 cps (10 cpi)  
Draft 310 cps (10 cpi)  
Letter Quality 103 cps (10 cpi)

**Paper Paths**

Front cut sheet entry; Rear continuous entry

**Multipart Forms**

Original + 5 copies

**Interface**

Parallel, optional Type B

**Printer Language**

ESC/P2, IBM 2390+/2391+ standard

**Dimensions**

9.0" H x 19.6" W x 15.2" D  
20.7 lb

**Sound Level**

55 dB (A)

**MTBF**

10,000 POH @ 25% duty cycle,  
35% coverage

**Warranty**

Two-year limited in the U.S. and Canada

**Product Code**

C376101

**Ideal Replacement for:**

Epson LQ-670, Star Micronics LC-8211,  
C.Itoh C-630, Citizen GSX-540



24-Pin Narrow



# Epson LQ-2090

*The wide-format solution for industrial performance and superior reliability*

#### Print Speed

High Speed Draft 440 cps (10 cpi)  
Draft 330 cps (10 cpi)  
Letter Quality 110 cps (10 cpi)

#### Paper Paths

Manual insertion Front or top in, top out  
Cut sheet feeder Top in, top out  
Tractor Front, rear or bottom in, top out

#### Multipart Forms

Original + 4 copies

#### Interface

Parallel, USB, optional Type B

#### Printer Language

ESC/P2 and IBM PPDS

#### Dimensions

10.1" H x 25.2" W x 15.4" D

21 lb

#### Sound Level

52 dB (A)

#### MTBF

20,000 POH @ 25% duty cycle,  
25% coverage

#### Warranty

Three-year limited in the U.S. and Canada

#### Product Code

C11C559001

#### Ideal Replacement for:

Epson LQ-1010, LQ-1050, LQ-1070, LQ-1070+,  
LQ-2070, LQ-2080, Okidata ML-391 Turbo,  
ML-491, Lexmark 2391, 2491



24-Pin Wide

# Epson LQ-2180

*The dependable, high-speed printer designed for the most demanding business environments*

#### Print Speed

High Speed Draft 480 cps (10 cpi)  
Draft 360 cps (10 cpi)  
Letter Quality 120 cps (10 cpi)

#### Paper Paths

Front/rear cut sheet entry, front/rear/bottom continuous entry

#### Multipart Forms

Original + 5 copies

#### Interface

Parallel, optional Type B

#### Printer Language

ESC/P2 and IBM 2391+ (IBM ProPrinter compatible) standard

#### Dimensions

10.11" H x 25.16" W x 15.82" D

28.7 lb

#### Sound Level

54 dB (A)

#### MTBF

10,000 POH @ 25% duty cycle,  
35% coverage

#### Warranty

Two-year limited in the U.S. and Canada

#### Product Code

C272001

#### Ideal Replacement for:

Epson LQ-1170, LQ-2170, Okidata ML-591,  
Lexmark 2391, 2491, Panasonic KX-P3626



24-Pin Wide

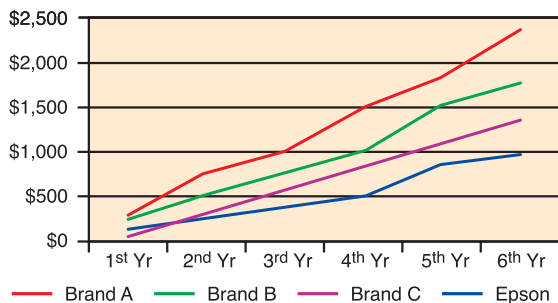
# Genuine Epson Ribbons

## 1 Save Money by Reducing Total Cost of Ownership

Consumers often respond to the immediate saving non-genuine ribbons offer at point of purchase without realising that the total cost of ownership is in fact higher. Based on Epson's internal testing, we have shown that using Epson genuine ribbons actually reduces your total cost of ownership by 60%.

### Reduce Total Cost of Ownership by 60%

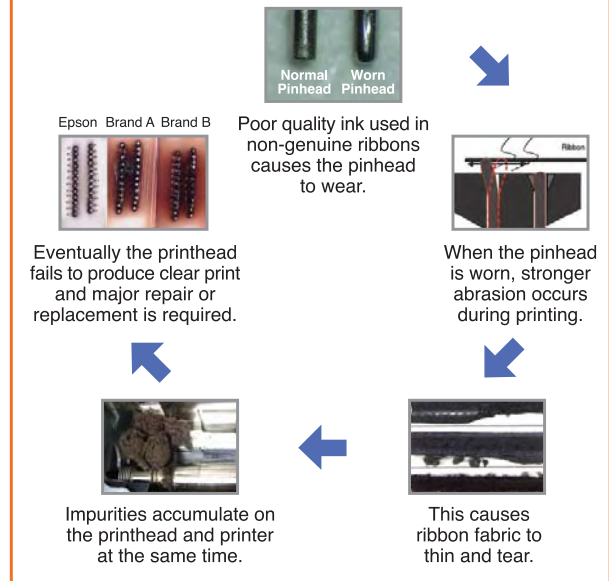
Ribbon TCO Per Year



In testing, the use of non-genuine ribbons resulted in more frequent printhead repair and replacement. After using 14 pieces of non-genuine ribbon, the printhead was damaged and required replacement. In comparison the Epson genuine ribbon did not cause damage to the printhead even after 55 pieces of ribbon were used.\*

The cost consumers pay for each printhead replacement can buy approximately 1<sup>1</sup>/<sub>2</sub> year's worth of Epson genuine ribbons. The actual cost of Epson genuine ribbons is in fact 2.4 times cheaper than non-genuine ribbons, taking into account all repair and replacement costs.\*\*

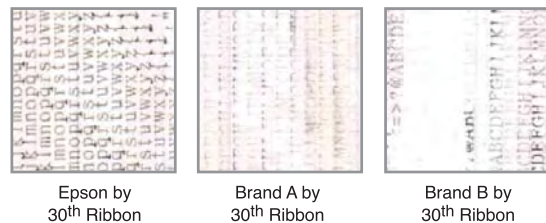
If you frequently need to repair or replace your printhead, you could be a victim of one of the following outcomes from using non-genuine ribbons.



\*Based on Epson internal testing on the LQ2180 impact printer.  
\*\*Based on Epson customer service replacement in Singapore.

## 2 Good and Consistent Print Quality

Compared to non-genuine ribbons, Epson genuine ribbons maintain print consistency over time and ensure that your prints are of a high quality. So while non-genuine ribbons fade and wobble, Epson genuine ribbon print quality remains true.



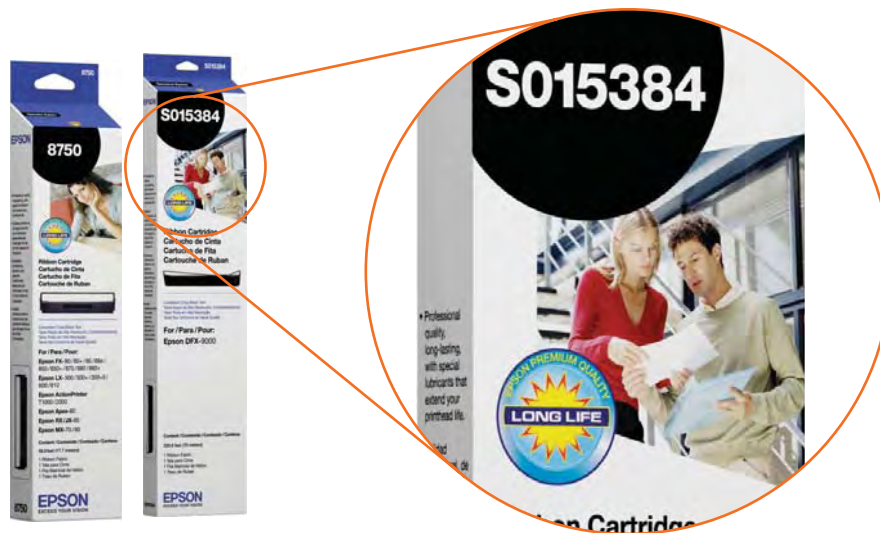
## 3 Environmentally Friendly and Not Hazardous to Your Health

Epson genuine ribbons comply with Restriction of Hazardous Substances (RoHS) guidelines which ensures that hazardous substances are not used. Some non-genuine ribbons do not comply to these guidelines and may contain substances which are harmful to you and the environment.



# Ribbons Compatibility List

Printer	Ribbon Code
Epson LQ-200/300/300+/500/510/570+/570e/800/850/870/L1000	7753
Epson LQ-1010/1050/1050+/1070+/1170/L-750	7754
Epson LQ-200/300/500/510/570/570+/570e/580/800/850/850+/870/1000/1010/1050/1050+/1070/1070+/1170	7755
Epson LQ-2500/2550/860/LQ-670	7762L
Epson LQ-950	7767
Epson LQ-200/300/500/510/570/570+/570e/580/800/850+/870	7768
Epson LQ-1000/1010/1050/1050+/1070/1070+/1170	7770
Epson FX-80/80+/85/86e/850/850+/870/880+/LX300/300+/300+II/800/810	8750
Epson FX-100/100+/105/185/286/286e/1000/1050/1050+/1170/1180/1180+/Epson LX-1050/1170	8755
Epson FX-70/80/85/86e/850/870/880/100/105/185/286/286e/1050/1170/Epson LX-300/300+II/800/810	8758
Epson DFX-5000/5000+/8000/8500	8766
Epson DFX-5000/5000+/8000/8500	8767
Epson AP-3250	S015032
Epson AP-2250	S015047
Epson LX-300/300+/300+II	S015073
Epson FX-2170/2180/LQ-2070/2080/2170/2180	S015086
Epson FX-980	S015091
Epson FX-890	S015329
Epson FX-2190/LQ-2090	S015335
Epson LQ-590	S015337
Epson PLQ-20/20M	S015339
Epson DFX-9000	S015384



## Other Epson Business Products



**The Epson Connection™**  
Pre-sales Support U.S. and Canada  
Automated Technical Support

(800) 463-7766  
(800) 922-8911

[www.epson.com](http://www.epson.com)

NOTE: Epson does not recommend use of this product in high-risk applications, where malfunction of the product could create a risk of death, serious injury or substantial property damage (for example, medical applications, disaster prevention systems or transportation systems). If the product is used in such an application, there should be fail-safe or redundancy mechanisms to reduce the possible harm resulting from malfunction. In no case is Epson responsible for any harm resulting from use in such an application.

Specifications and terms are subject to change without notice. EPSON, Epson Exceed Your Vision, Epson ESC/P and Epson ESC/P2 are registered trademarks of Seiko Epson Corporation. "The World Leader in Impact Printing" is a trademark of Epson America, Inc. All other product and brand names are trademarks and/or registered trademarks of their respective companies. Epson disclaims any and all rights in these marks.  
© 2007 Epson America, Inc. CPD-LE100424 11/07

