



# T1 CSU ACE

## Compact T1 Network Facility Interface

### Product Features

- T1 line-conditioning and jitter tolerance per ANSI T1.403, T1.102 and AT&T TR 62411
- Supports framed (B8ZS or AMI) or unframed signal formats
- Transmits unframed "all 1s" during signal loss from DTE or T1 network
- Bantam test jacks
- Front panel status LEDs
- 12 VDC powered
- Desktop or wallmount
- Industry-leading five-year North American warranty

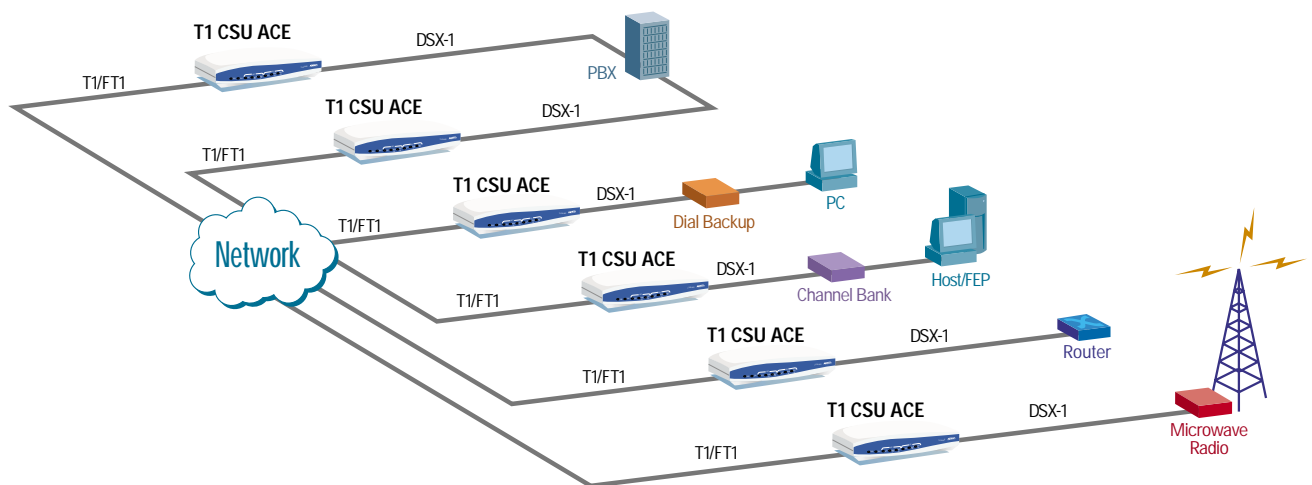
**The ADTRAN® T1 CSU ACE™ is a compact, full-featured T1 channel service unit used to connect T1 data terminal equipment (DTE) and T1 facilities.** The unit is designed to provide alarms, loopbacks, signal regeneration, line build out, and surge protection.

The unit is suitable for wallmounting or desktop use. Five LEDs on the front of the unit (POWER, SYNC, NETWORK LOS, NETWORK MANUAL and REMOTE LB, EQ LOS, EQ MANUAL and REMOTE LB) display the status of the unit. On the back of the unit an eight position dip switch provides settings for customer premises equipment and network line build out (LBO) distances as well as manual loopback operation. The two network LBO switches provide four combination settings from 0 to 22.5dB in 7.5dB increments. The three switches allotted for the equipment LBO offer five combination settings for PBX termination at distances up to 655 feet. Two additional switches provide

for manual loopback (LB) in both the Equipment (EQ) and Network (NET) directions. The last switch is a spare.

The unit provides three bantam jack pairs for testing purposes. Two pairs provide interruptive transmit and receive access toward the T1 network or the Data Terminal Equipment (DTE) device. The third pair is a non-interruptive connection for monitoring data flowing in either direction. Two RJ-48C modular jacks provide the network and DTE connections. A 12 VDC wallmount power supply that plugs into a receptacle is included with the unit. The T1 CSU ACE also supports wallmount applications via integrated keyholes in the base.

For additional T1 applications, ADTRAN provides several versions of the T1 CSU offering various features and mounting options. ADTRAN T1 CSU products include the T1 ESF CSU and the rackmounted T1 ESF CSU Smart 16 Card.





ADTRAN, Inc.

Attn: Enterprise Networks  
901 Explorer Boulevard  
Huntsville, AL 35806

P.O. Box 140000  
Huntsville, AL 35814-4000

256 963-8000 voice  
256 963-8699 fax  
256 963-8200 fax back

**General Information**  
800 9ADTRAN  
info@adtran.com  
www.adtran.com

**Pre-Sales  
Technical Support**  
800 615-1176 toll-free  
application.engineer@adtran.com  
www.adtran.com/support

**Where to Buy**  
877 280-8416 toll-free  
channel.sales@adtran.com  
www.adtran.com/where2buy

**Post-Sales  
Technical Support**  
888 423-8726  
support@adtran.com  
www.adtran.com/support

**ACES Installation &  
Maintenance Service**  
888 874-ACES  
aces@adtran.com  
www.adtran.com/support

**International Inquiries**  
256 963 8000 voice  
256 963-6300 fax  
international@adtran.com  
www.adtran.com/international

**For the regional office  
nearest you, visit:**  
www.adtran.com/where2buy



ADTRAN is an  
ISO 9001:2000 certified supplier.



ADTRAN is a  
TL 9000 3.0 registered company.

61203022L1-8B March 2004  
Copyright © 2004 ADTRAN, Inc.  
All rights reserved.

# T1 CSU ACE

## Compact T1 Network Facility Interface

### Product Specifications

#### Network Interface

##### Line Rate

- T1/FT1 (1.544 Mbps)

##### Physical Interface

- RJ-48C: 8-pin modular

##### Specifications

- AT&T TR62411
- ANSI T1.403

##### Framing

- D4 (SF)/ESF

##### Line Code

- AMI/B8ZS

##### ESF Format

- Transparent

##### Input Signal

- 0 to -36dB, Auto sensitivity setting

##### Transmission Type

- Regenerative transparent toward network and toward DTE

#### Equipment Interface

##### Electrical

- DSX-1

##### Compliance

- ANSI T1.102

##### Receiver Performance

- Line build out for 0–655 ft

##### Keep Alive Signal

- Unframed all 1s on loss of signal from DTE

#### User Options

##### Option Switches

- Network loopback
- Equipment loopback
- Network Line Build Out (0, 7.5, 15, 22.5dB)
- Equipment Line Build Out (0–133, 134–265, 266–399, 400–533, 534–655 ft)

##### Test Jacks

- Interruptive test signal access network and DTE
- Non-interruptive signal receive monitor for network and DTE

#### LED Indicators

- Power
- Sync
- Network Loss of Signal
- Network Manual and Remote Loopback
- Equipment Loss of Signal
- Equipment Manual and Remote Loopback

#### Mounting

- Desktop or Wallmount

#### Compliance

- FCC Part 15, Class B
- FCC Part 68
- Industry Canada CS03
- UL 1950, third edition
- CUL

#### Environment

##### Operating Temperature

- 0° to 50°C, (32° to 122°F)

##### Storage Temperature

- -20° to 70°C, (-4° to 158°F)

##### Relative Humidity

- Up to 95%, non-condensing

#### Physical

##### Dimensions

- 1.45" H, 4" D, 6.7" W

##### Weight

- 12.8 oz

##### Power

- 12 VDC

#### Product Includes

- 115 VAC to 12 VDC power supply
- RJ-45 cable
- User manual

### Ordering Information

Equipment	Part #
T1 CSU ACE	1203022L1
12 VDC Replacement Power Supply	1903022L1
19" Rackmount Shelf for Two Units	1200412L1



Specifications subject to change without notice. T1 CSU ACE is a trademark of ADTRAN, Inc. ADTRAN is a registered trademark of ADTRAN, Inc. All registered trademarks and trademarks mentioned in this publication are the property of their respective owners.