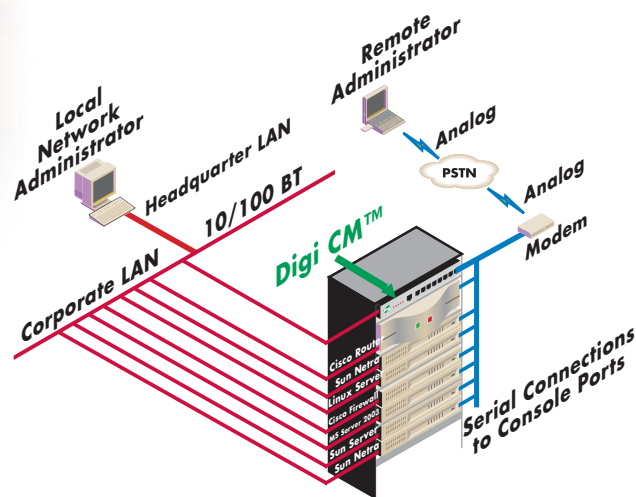


# Digi CM™

Console Server

Secure in-band and out-of-band management for servers, routers, switches, firewalls and other network equipment.



## Features/Benefits

- > Sun, Cisco, IBM, HP, UNIX, Linux and Microsoft Windows Server™ 2003 compatible
- > SSH v2 for secure access
- > 1U 19" rack-mountable for better co-location with network hardware
- > Automatic Device Recognition for simple setup
- > Secure clustering allows multi-server access via one IP address
- > Port buffering/logging for easy troubleshooting
- > Email/pager alerts and SNMP traps
- > RADIUS, TACACS+, Kerberos and LDAP for a variety of authentication options
- > Straight-through CAT5 cabling for easy server connection
- > PC Card slot for Wi-Fi, memory, or modem cards

## Overview

Digi CM allows IT administrators to securely monitor and control servers, routers, switches and other network devices. It provides access to the serial port of key network equipment from anywhere on the corporate TCP/IP network, over the Internet, or through dial-up modem connections. Popular applications for Digi CM include access to servers (e.g., UNIX, Linux, Sun, Windows Server 2003), routers/switches (e.g., Cisco), firewalls and more.

Digi CM employs SSH v2 encryption to keep server access passwords safe from intruders, and supports all popular SSH clients. It also includes support for RADIUS, TACACS+, Kerberos, LDAP and other user authentication programs. Users may perform key console management functions and configuration using Digi's best-in-class Web User Interface built right into the unit. Intuitive port naming and multi-level menuing make the Digi CM the easiest-to-use console server on the market.

Other premium features include port logging, server clustering, email/pager/SNMP alerts and Automatic Device Recognition. Digi was first with Automatic Device Recognition technology which allows the server to poll its attached devices and autoconfigure itself with the device type, name and OS version. Digi CM also offers a PC Card slot for dial-up modems, wireless network cards or Flash memory cards.

Digi CM connects to console serial ports of Cisco and Sun devices using standard CAT5 cables for hassle-free straight-through cabling. Converter cables/adapters are offered for pain-free connections to most servers. Digi CM is available in 8-, 16-, 32- and 48-port models, in a 19" 1U rack-mount form factor. DC powered versions with dual inputs are also available for fail-safe operation. Test drive the Digi CM today at [www.digi.com/cmdemo](http://www.digi.com/cmdemo).



[www.digi.com](http://www.digi.com)

Making  
**DEVICE NETWORKING**  
easy™

# Features/Specifications

## FEATURES

- Security
  - SSH v2 server and client, SSL, IP filtering
- Authentication
  - TACACS+, RADIUS, LDAP, Kerberos, local user database
- Management
  - Command line
  - Web – HTTP/HTTPS
  - SNMP
  - Port triggers and alerts
  - Multi-level menuing
  - Auto-discovery
  - Automatic Device Recognition
- Data capture via port buffering and logging (syslog, NFS, PC Card)
- Port access
  - Telnet/SSH with menuing, Reverse Telnet/SSH, HTTP/HTTPS
- Solaris Ready
- Multiple users per port
- Flash upgradeable
- SSH sessions simultaneously on all ports
- Secure clustering - single IP for multiple Digi CM devices
- IP addresses per port
- Standard CAT5 cabling for RJ-45 serial ports
- 19" rack mount kit included

## POWER REQUIREMENTS

- Digi CM 8:**
- External 100-240VAC, 50/60 Hz, 12W max, 6W typical
- Digi CM 16/32/48:**
- Internal 100-240VAC, 50/60 Hz, 40W max, 12W typical
  - Power supply MTBF: 11 years
  - -48VDC versions, 40W max, 12W typical

## CONNECTORS

- 8, 16, 32 or 48 RJ-45 RS-232 serial ports
- One RJ-45 RS-232 console port
- One RJ-45 10/100Base-T Ethernet port

## ENVIRONMENTAL

- Operating temperature: 5° C to 50° C (41° F to 122° F)
- Storage temperature: -30° C to +60° C (-20° F to +140° F)

## PC CARDS SUPPORTED

- CompactFlash memory card
  - Wireless LAN adapter (802.11b)
  - Ethernet LAN adapter
  - PSTN/CDMA modem card
- See <http://cm.digi.com> for more information

## REGULATORY APPROVALS

- FCC Part 15, A
- UL 1950, EN60950
- EN55022, A
- EN55024
- CE

## MEMORY

- 64 MB SDRAM
- 8 MB Flash
- 256 MB SDRAM (Digi CM 48)
- 16 MB Flash (Digi CM 48)

## OPERATING SYSTEMS

- Embedded Linux (Hard Hat Distribution) <http://cm.digi.com>

## DIMENSIONS

- Digi CM 8**
- Length: 9.5 in (24.1 cm)
  - Depth: 1.25 in (3.2 cm)
  - Width: 6.25 in (15.9 cm)
  - Weight: 2.5 lbs (1.1 kg)

- Digi CM 16/32**
- Length: 17.0 in (43.2 cm)
  - Depth: 1.75 in (4.5 cm)
  - Width: 8.5 in (21.6 cm)
  - Weight: 5.8 lbs (2.6 kg)

- Digi CM 48**
- Length: 17.5 in (44.5 cm)
  - Depth: 1.75 in (4.5 cm)
  - Width: 10.0 in (25.4 cm)
  - Weight: 6.4 lbs (2.9 kg)

## MODEL ..... PART NUMBERS

Model	North America	International
Digi CM 8	70001931	70001932
Digi CM 16	70001910	70001911
Digi CM 16-VDC	70001938	70001938
Digi CM 32	70001908	70001909
Digi CM 32-VDC	70001937	70001937
Digi CM 48	70001949	70001950
Digi CM 48 Dual AC	70001951	70001952
Digi CM 48-VDC	70001953	70001953
<b>Cable Adapters and Accessories</b>		
Digi CM DB-25 Male Modem Adapter (8-pack)	76000670	76000670
Digi CM DB-9 Female Console Adapter (8-pack)	76000671	76000671
Digi CM DB-25 Male Console Adapter (8-pack)	76000672	76000672
Digi CM DB-25 Female Console Adapter (8-pack)	76000673	76000673
Digi CM Telco 23" Rack Mount Kit	76000689	76000689



**PIN SIGNAL**

1	CTS
2	DSR
3	RID
4	SAFETY GND
5	DCD
6	TxD
7	DTR
8	RTS



## DIGI SERVICE AND SUPPORT

You can purchase with confidence knowing that Digi is here to support you with expert technical support and a strong five-year warranty. <http://support.digi.com>

**Digi International**  
 11001 Bren Road E.  
 Minnetonka, MN 55343 USA  
 PH: 877-912-3444  
 952-912-3444  
 FX: 952-912-4952  
 Email: [info@digi.com](mailto:info@digi.com)  
[www.digi.com](http://www.digi.com)

**Digi International GmbH**  
 Joseph-von-Fraunhofer Str. 23  
 D-44227 Dortmund  
 Germany  
 PH: +49-231-9747-0  
 FX: +49-231-9747-111  
[www.digi.de](http://www.digi.de)

**Digi International (HK) Limited**  
 Suite 1703-05  
 K Wah Centre  
 191 Java Road  
 North Point, Hong Kong  
 PH: +852-2833-1008  
 FX: +852-2572-9989  
[www.digi.cn](http://www.digi.cn)

[www.digi.com](http://www.digi.com)

email:  
[info@digi.com](mailto:info@digi.com)



91001129  
 G2/105