

Epson

# Ethernet

## Interface Modules II & III



Now you can place Epson printers anywhere on your network and access them from any location—even the Internet—with Epson's Ethernet Connect-It™ interface modules.

Designed to increase printing speed and flexibility, the Epson Ethernet modules provide a cost-effective solution to establish communications between host systems and your POS printers.

### Two connectivity options

Epson Ethernet modules allow Epson printers to be connected to any 10Base-T Ethernet network. The Ethernet II module offers a wide range of interface and configuration options, enables remote configuration of printer network settings from anywhere on the network via standard web browser and includes field-upgradeable firmware to support functionality changes and enhancements. The Ethernet III module is designed for more cost-sensitive environments and includes a simple Microsoft® Windows® utility to rapidly configure and test network printer settings.

### Faster communications

Both modules feature speeds of 10Mbps and streamline your POS system by using high-speed Ethernet. The result? Your system is free of bottlenecks for faster transactions and checkout lines.

### Quick, simple installation

The modules install directly into the standard Connect-It slot in the printer. There are no external boxes or adapters as with other Ethernet solutions. The modules also feature standard RJ-45 Ethernet connectors for easy plug and go operation.

### Easy configuration

The Epson Ethernet modules use industry-standard DHCP protocol to establish low-level TCP/IP configuration. Once this communication has been established you can easily configure the rest of the module features via web browser or standard Microsoft Windows utility.

### Superior reliability and lower maintenance costs

Epson POS printers with Connect-It technology meet the highest quality and reliability standards in the industry. And Epson printers are packed with superior design features that ensure ease of use, extended life and lower consumables and maintenance costs.

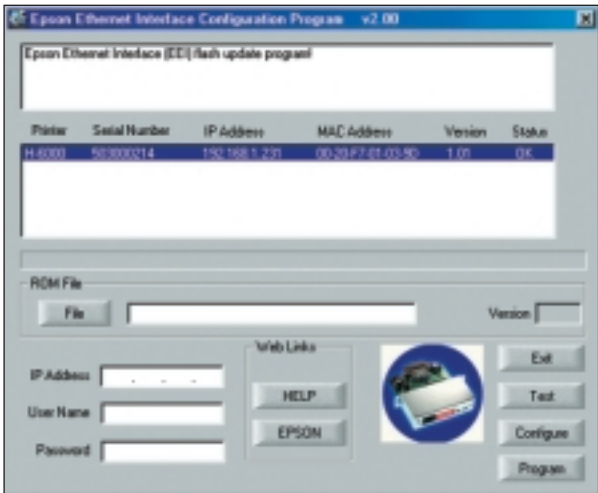
- Uses standard TCP/IP protocol
- Easy installation and configuration
- Options offer configuration via Windows utility or standard web browser
- Field programmable firmware with Ethernet II option

Epson's Ethernet III interface module includes a Microsoft Windows utility for rapid configuration.

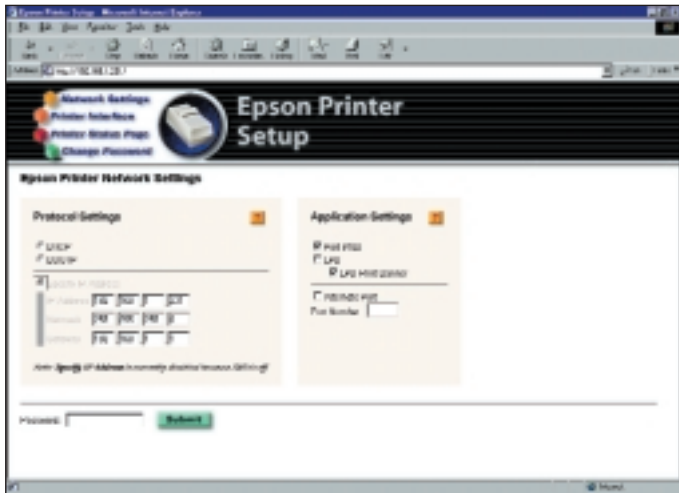


# Epson Ethernet Interface Modules

Module Specifications	Ethernet II	Ethernet III
<b>Speed</b>	10Mbps	
<b>Connection</b>	10Base-T RJ-45 network connector	
<b>Status LEDs</b>	Network traffic, Module/Network health	
<b>Interfacing</b>	TCP/IP, OPOS, DHCP, Port 9100 Support, HTTP, BootP, LPD	TCP/IP, OPOS, DHCP, Port 9100 Support
<b>Configuration</b>	Browser-based configuration Windows utility for configuration and printer status reporting ARP plug support	Windows utility for configuration and printer status reporting
<b>Diagnostic Support</b>	Offline report generation 8 front-panel switch options Status and traffic LEDs Field upgradeable	Offline report generation 4 front-panel switch options Status and traffic LEDs
<b>Networks Supported</b>	Microsoft® and UNIX®	
<b>Clients Supported</b>	Windows® 95/98/NT/2000/Me and UNIX	
<b>EMI Standards</b>	FCC Class A, CE	
<b>Safety Standards</b>	UL, cUL	



The Ethernet III module offers a simple, intuitive Microsoft Windows utility for configuring your Epson printers for network operation.



The Ethernet II module offers the added convenience of configuring printer network settings remotely from anywhere on the network, via a standard web browser.



Conforms to OLE POS specifications.  
SD-DSETHB

Specifications are subject to change without notice.